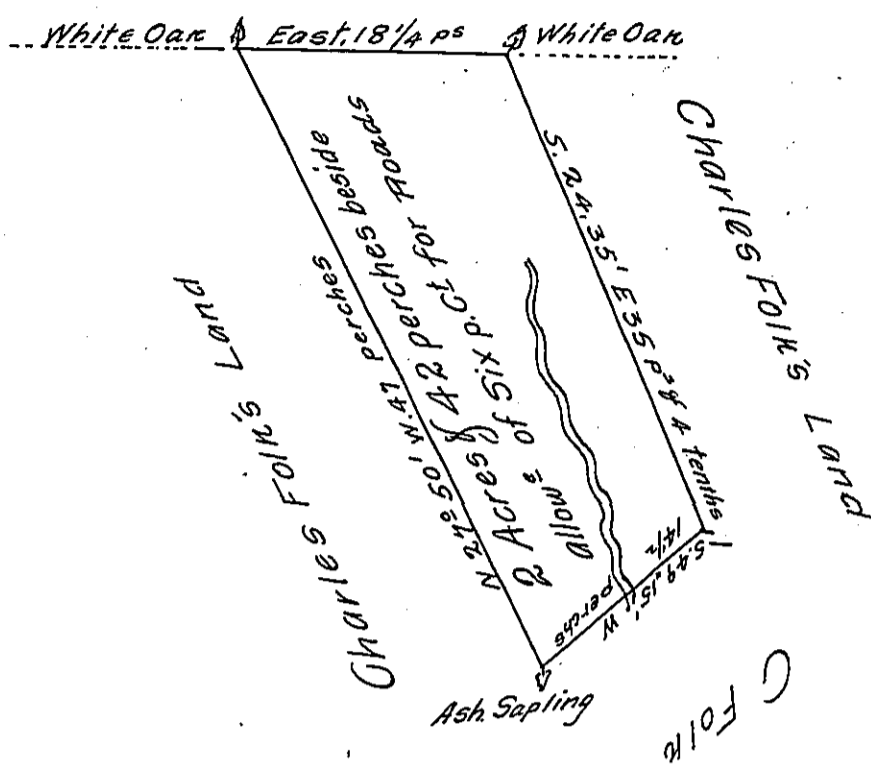


Land lately surveyed to Charles Folk



Pursuant to an order from Richard Peters Esq^r, dated ye 27th April 1758, Surveyed the _____ Day of _____ to John Okely the above described tract of land (being part of a larger tract originally laid out to Wyndel Keifer) situate on a branch of Maiden Creek in the County of ~~Butts~~ Northampton containing Two acres & 4 1/2 perches with allowance of six p. Cent

Edw^d Scull

IN TESTIMONY that the above is a copy of the original remaining on file in the Department of Internal Affairs of Pennsylvania, made conformably to an Act of Assembly approved the 16th day of February, 1833, I have hereunto set my Hand and caused the Seal of said Department to be affixed at Harrisburg, this fourth day of April 1906

James B. Brown
Secretary of Internal Affairs.